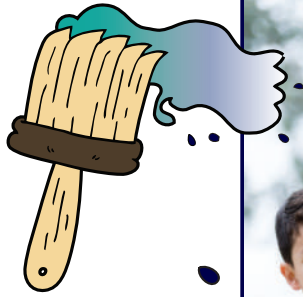


LEAD SAFE WESTMORELAND

Protect your family from lead-based paint hazards in your home!



NEW
program offered
to Westmoreland
County
residents!

For more information contact:
Westmoreland County
Department of Planning and Community Development
Londe Dandar: 724.830.3366
LDandar@co.westmoreland.pa.us



Qualifications for the program:

- Was your home built before 1978?
- Does your household's annual income fall at or below the maximum income guidelines?
- Does a child under the age of 6 live with you or visit your home at least 6 hours per week?
- Does a pregnant woman live in your household?

2021 INCOME GUIDELINES

# persons living in household	Max. household income per year
1	\$47,500
2	\$54,300
3	\$61,100
4	\$67,850
5	\$73,300
6	\$78,750
7	\$84,150
8	\$89,600



www.co.westmoreland.pa.us/leadsafe

40 N. Pennsylvania Avenue, 5th Fl., Ste. 520, Greensburg, PA 15601